

IVS2000 video monitoring

Instruction manual

Statement

- Because the product version upgrade or other reasons, this manual content may change.
- We will keep the right to change the contents of this manual in the absence of any notice.
- This manual is used only as a guide, we try our best to provide accurate information in this manual, but it does not ensure that no error occur, all the statements, information and advice in this manual does not constitute any express or implied guarantees.

1 Software introduce

1.1 Overview

This software is powerful centralized management software, distributed architecture, set multi-window, multi-users, multi- language, voice intercom, video conference, classifying electronic map, alarm center, and compatible with other extension products, PC directly connected equipment monitoring system, and other functions into one. Software has functions of electronic map, friendly interface, simple operation, convenient for permissions Settings.

This software is designed for connecting many sets of different type and model of equipment (such as DVR, IPC, etc), this manual is only for software operation, involves the function of the specific equipment Settings, please read the relevant product specification.

This manual is provided for the people who be responsible for planning, implementation and review of the network video monitoring software, hardware installation. You should have related knowledge and experience of the basic operation of equipment (such as DVR, IPC,

etc.).

1.2 Operating environment

The minimum requirements for the hardware:

CPU P4/2.0GHz

RAM 512M

1024*768 resolution of a display and at least 128 MB video memory card
(support for DirectX version 8.0 or above)

HARD DISK 300M free space

10/100M Ethernet network transmission, comply with TCP/IP or UDP/IP.

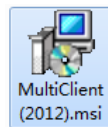
The minimum requirements for the software:

Recommended operating system: Windows XP SP2; support Windows 2000、Windows 2003、
Windows Vista、win7 (Under Windows Vista, Windows 7, right click run as
administrator)、Mac OS

must be complete to install graphics drivers.

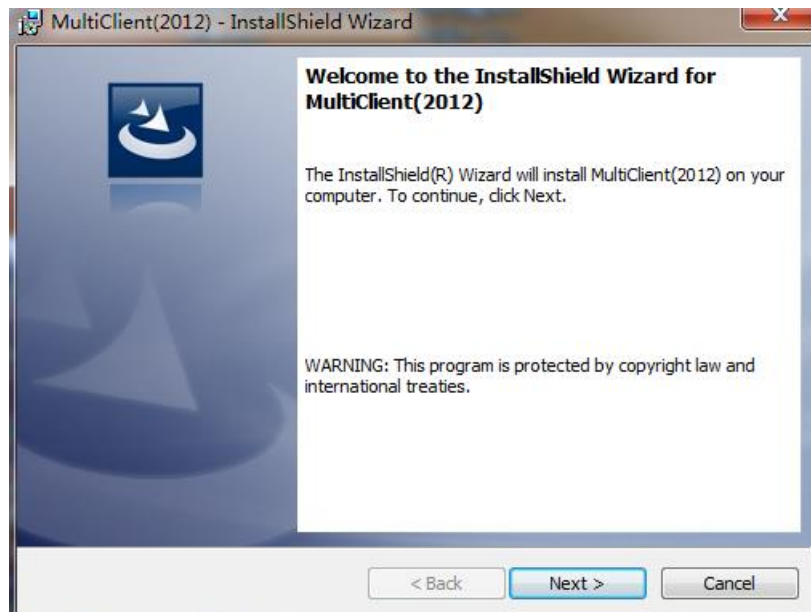
2 Software Installation

2.1 The Windows platform software installation

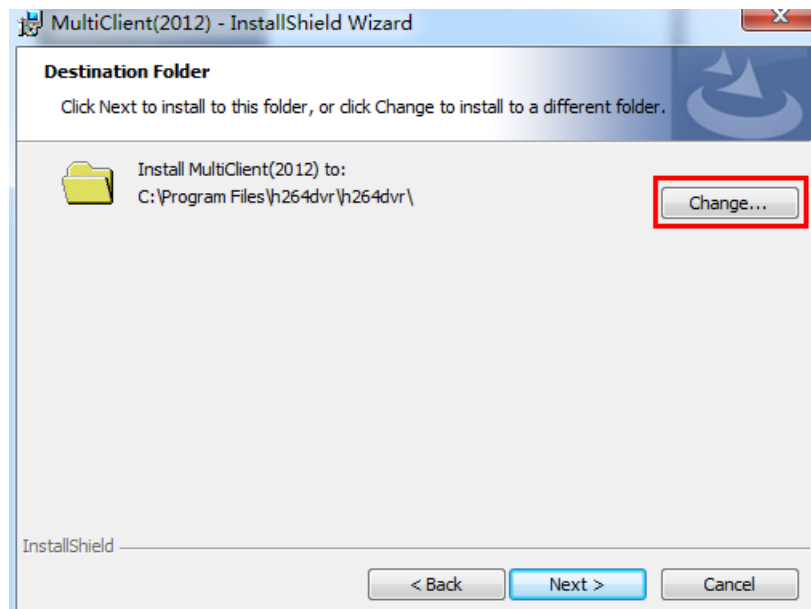


1. Double-click Multi-Client(2012).exe

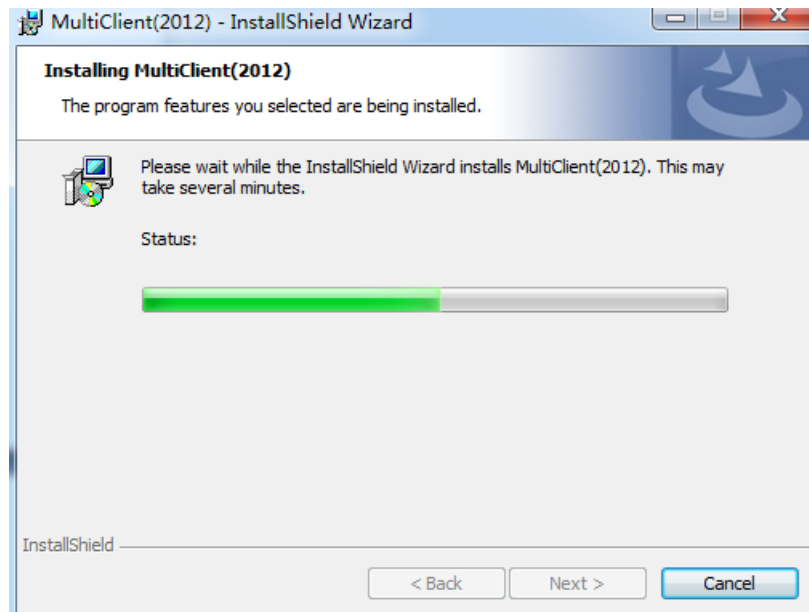
2. According to the following steps to install:



After double-clicking on interface



Select the installation path, the default is C:\Program\h264\h264\



Click next until the finish

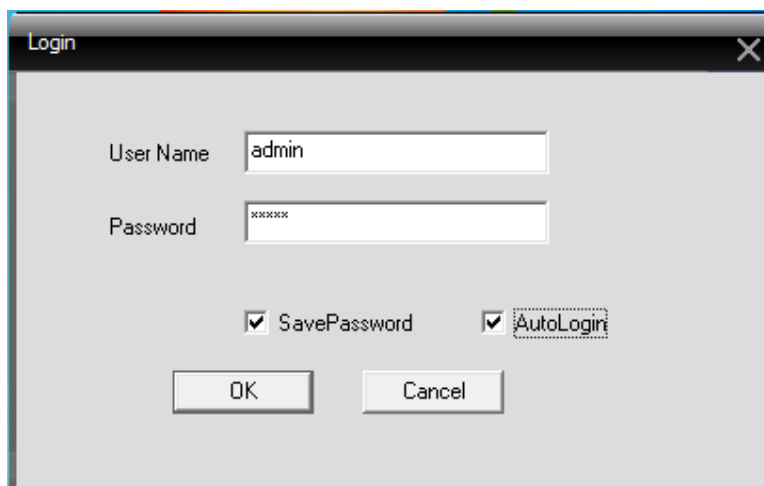
3. After the installation is complete, the icon is generated on the desktop



3 Login and interface introduction

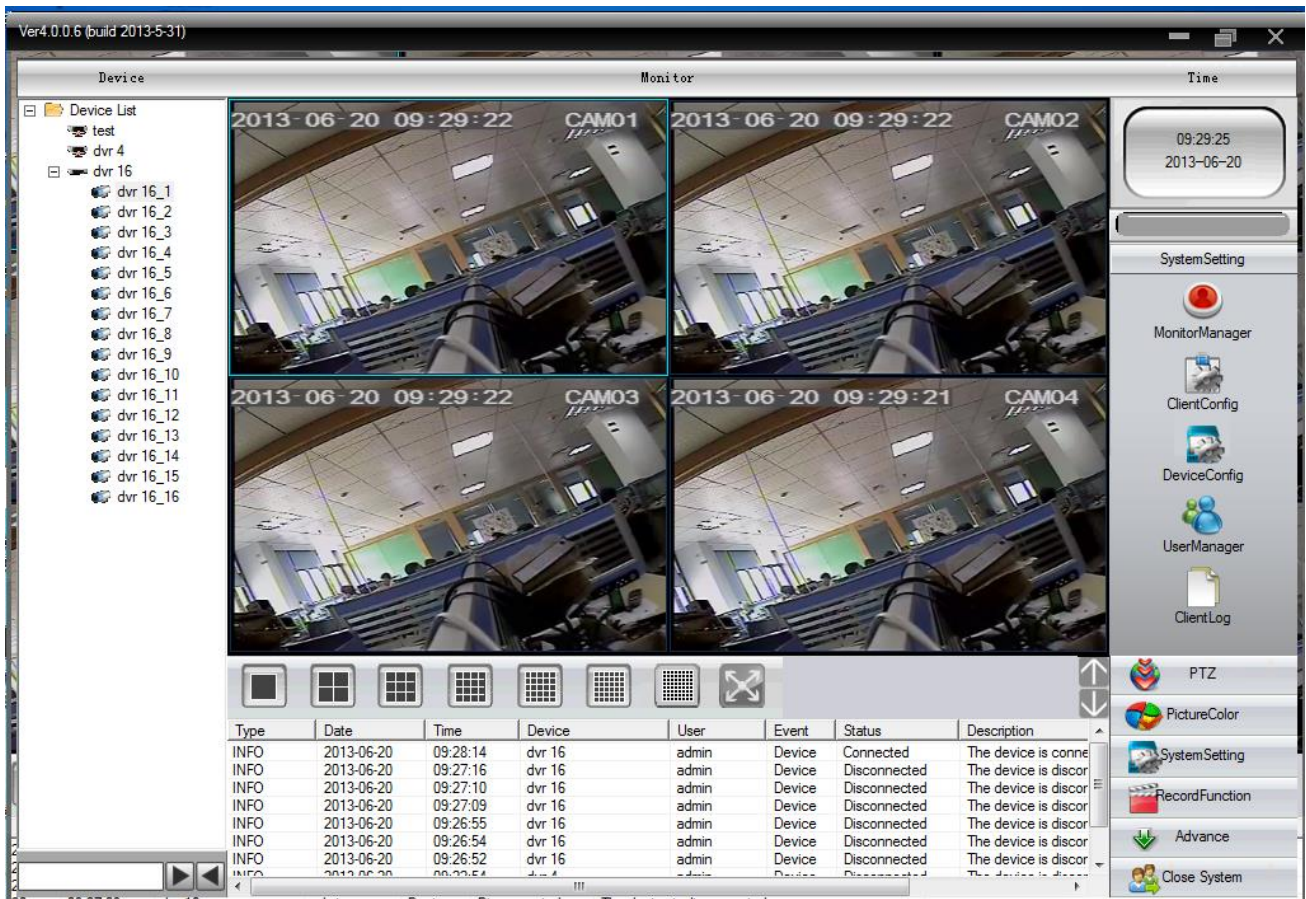
3.1 System login

Double-click the Multi-Client icon, pop-up login interface, the diagram below, input account and password, after points [determine] into the system. When you login the system in the first time, a built-in admin account has equipment management permissions, you can use the admin account to login (username and password by default). After entering the system, can be modified in accordance with the user habit.



3.2 Interface Introduction

After enter the system, the interface see below. Menu system main interface is divided into video viewing area, menu area, equipment channel display area, the clip area, time, date, hard disk capacity display, system information display area.



3.2.1 Right-click menu:

Real-time preview images. Right click and pop-up tool options, including the window closes, audio, video, local amplification and screenshots. The channel and channel position can be exchanged by dragging the mouse.



3.2.2 Menu area:

Menu area including cradle head, images, colors, system settings, video recording, advanced features, shut down system.

Level 1 menu	Level 2 menu	Level 3 menu	
			Click on the corresponding button in the preview mode, To choose preview the scene mode. For each channel to switch or intercept the scene pictures. Close/open site preview images.
cradle head			Through the operation panel to control fast ball up, down, left, right, or stop running. Adjust step, variable times fast ball, focus, aperture, scanning. Set the preset cruising path between point and point. When cruising function start, in accordance with the fast ball set cruising path for a cruise.
Picture Color			Set the scene of the brightness, contrast, saturation and hue, and restore the factory default Settings.
system settings	Monitor manager	Add	To add video equipment in point to point.
		edit	Modify the device name, login type, port number, user name, password.
		delete	Delete the video monitoring equipment
	Client config	Basic config	Storage options, log information maintenance, choice of storage directory, CMS language choice.
		Equipment information	Equipment channel information, alarm information
	Device config		Configure the device parameters.
	user manager		Create users, change user and delete users.
The client log		Query alarm log or log operation within the limits of	

			time.
Video Record		Video playback	Search need video file to playback.
		Video program	Sets the client video time
Senior	Decoder		Set the DVR and the corresponding decoder
	Electronic map		Through the electronic map, intuitive reflect each position of the camera, find the current monitoring page through map directly
	Night vision round tour		By making round tour plan, can be more convenient to preview round tour in each channel.








3.2.3 Equipment channel display area:


"Equipment channel display area" is used to display the current preview channel. Users can preview scene, also can be set the management of channel groups to preview the scene. The user can click on the "equipment list" or "channel grouping" label switch the path.

3.2.4 Image segmentation area:

In the operation area, the user can choose to preview the scene mode, also can undertake single screen capture for each channel, can turn off the preview images.

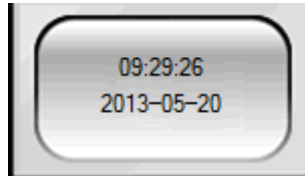
The preview image function button introduction:

1		"Single picture preview" button. Click the button can use big screen mode to preview each channel.
2		"4 picture preview" button. Clicking this button you can preview 4-channel-picture mode to preview each channel picture.
3		"9 picture preview" button. Clicking this button you can preview 9-channel-picture mode to preview each channel picture.
4		"16 picture preview" button. Clicking this button you can preview 16-channel-picture mode to preview each channel picture.
5		"25 picture preview" button. Clicking this button you can preview 25-channel-picture mode to preview each channel picture.
6		"36 picture preview" button. Clicking this button you can preview 36-channel-picture mode to preview each channel picture.
7		"64 picture preview" button. Clicking this button you can preview 64-channel-picture mode to preview each channel picture.

8		"Full screen" button. Click the button to enter the full screen preview interface.
---	---	--

3.2.5 Time and date display:

Show the current CMS running system time and date.



3.2.6 Hard disk capacity display:

Displays the using status of the current CMS used for video disk partition, including hard disk capacity and utilization.



3.2.7 System information display area:


Show the interaction information of the current CMS connecting with the equipment.

Type	Date	Time	Device	User	Event	Status	Description
INFO	2013-06-20	13:41:15	test	admin	Device	Disconnected	The device is disconnected.
INFO	2013-06-20	13:41:12	dvr 4	admin	Device	Disconnected	The device is disconnected.
INFO	2013-06-20	13:41:08	dvr 16	admin	Device	Connected	The device is connected.

3.2.8 PTZ control

When the network video monitoring server connected to the fast ball, the user can in the control center to control the ball quickly. When the network video monitoring server connected to the fast ball, the user can in the control center to control the ball quickly. Can adjust the rotation speed of the fast ball, aperture, zoom and focus; Can also set the preset cruising path between point and point. After user's starting the cruise function between point, fast ball can be set according to user's cruising path for a cruise.

On the operation panel of PTZ, the user can control fast ball rotation mode and rate. Each function in the operation panel button shows as follows:

numerical order	icon	Introductions
1		rotation control of high-speed ball

2		Speed control, control cradle head rotational speed
3		Lens turn times. Through the lens to zoom in and zoom out the picture.
4		The focal length of the spin to shorten and lengthen
5		Adjust the size of the aperture, control into the light.
6		
7		Preset point refers to the user to monitor the scene of a particular location, preset camera, point to add, delete, set the preset point
8		Cruising path refers to the user set the preset point to set up the fast ball movement path. Cruise, fast ball will be in accordance with the set of paths in turn display monitor each preset point in the scene.

3.2.9 Image settings

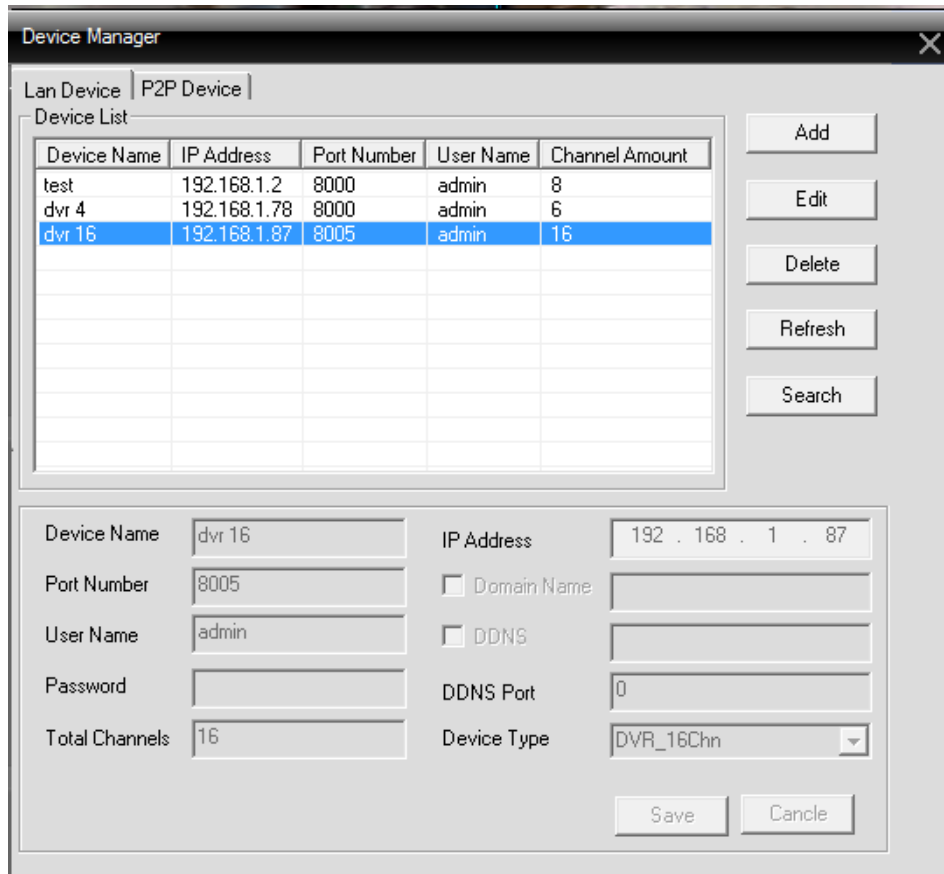
numerical order	icon	Introductions
1		intensity control
2		contrast control
3		saturation control
4		chrominance adjustment

Note: click the "restore defaults" button, all Settings will be restored to the initial value.

4 System settings

4.1 monitoring point setting

4.1.1 Add monitoring point, the diagram below.



Device name: mainly used for the difference between other devices, can better distinguish and identify

Port number: the TCP port number, equipment data transmission port number

User name: equipment login ID

Password: equipment login password

Channel: equipment channel number, DVR with 4,8,16 etc., IPC usually write 1

IP address: the IP address of the equipment, inner network can use IP address to connect to

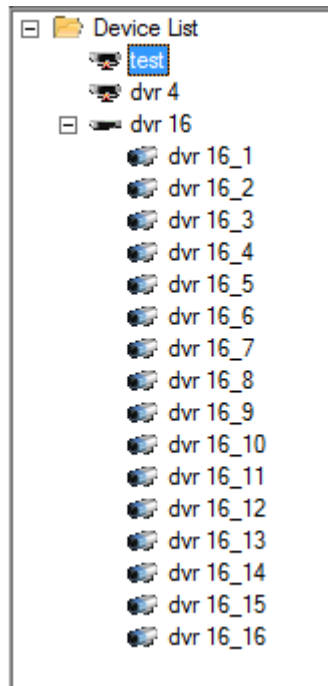
Domain: when the equipment link to the outer network, in order to ensure that can connect at any time, just use the way of domain name, to prevent the equipment IP address changed leading to inaccessible

DDNS: has a similar function with the domain name

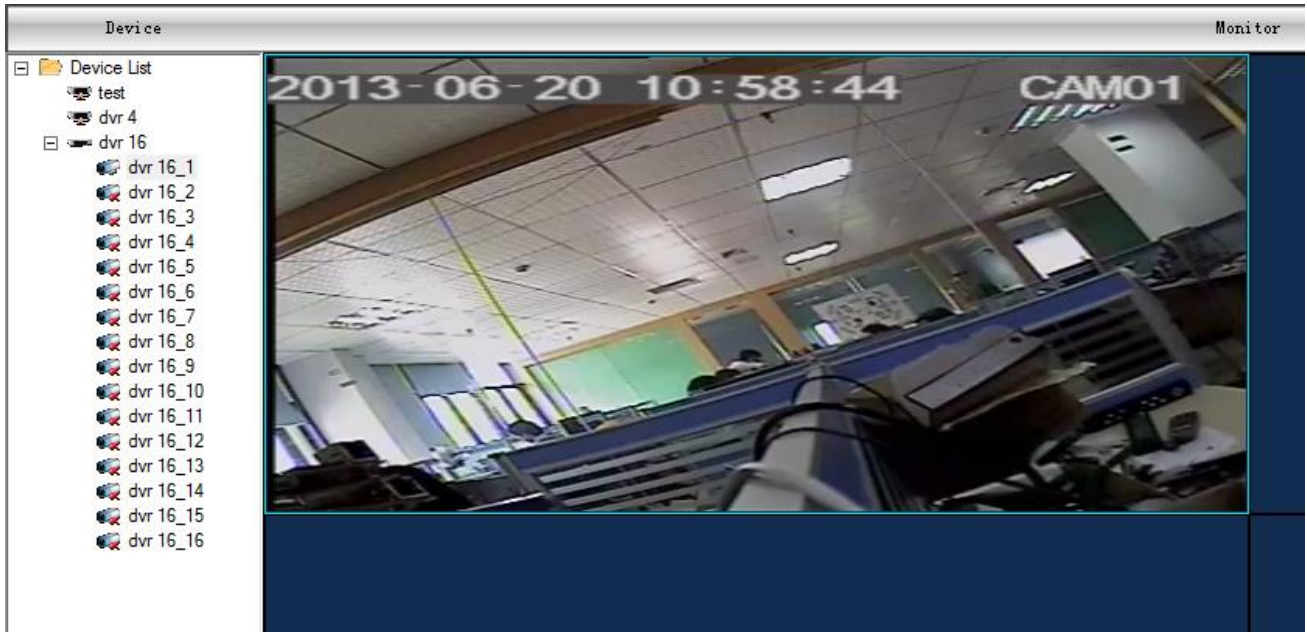
Setup is completed, click save, can see just add device in the device list, double-click on the equipment, system began to connected devices. You can see the following information:

Type	Date	Time	Device	User	Event	Status	Description
OneChannelView	2013-06-20	10:52:36	test	admin	Device	Disconnected	The device is disconnected.
INFO	2013-06-20	10:52:30	dvr 4	admin	Device	Disconnected	The device is disconnected.
INFO	2013-06-20	10:50:09	dvr 16	admin	Device	Connected	The device is connected.

Wait until the show when the connection is successful, you can see equipment for each channel is displayed below the device name:



Click to display the preview box, and then double-click to display the channel of the equipment you need, the system will automatically connect the channel video to the preview box. The following figure:



4.1.2 Modify the device:

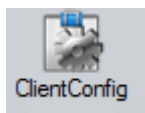
After entering monitoring point management, clicking on the equipment that need to modify, then click to edit, you can modify the device.

4.1.3 Delete the device:

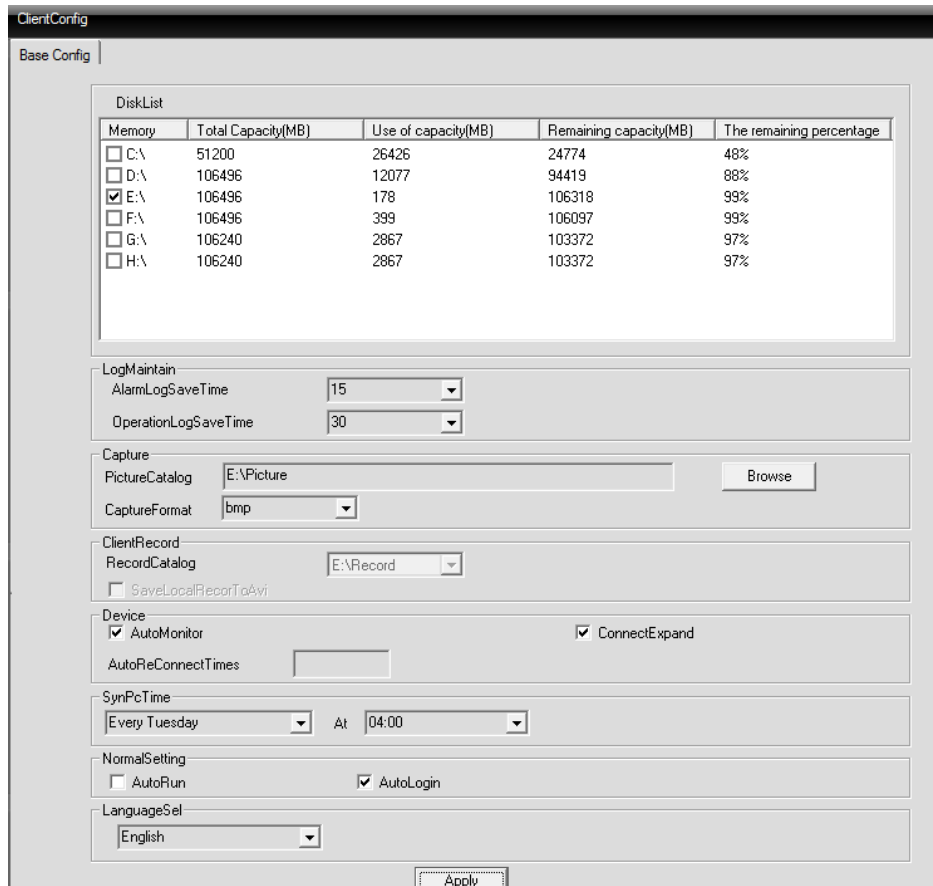
After entering monitoring point management, click on the equipment that need to delete, then click to edit, you can delete the device.

Note: modifying, and deleting monitory point, you need to disconnect the equipment.

4.2 client configuration



4.2.1 click  , Enter client configuration page, the following figure:



Client configuration page, including local storage directories and store settings, grasp diagrams, etc.

Storage: choose the hard disk to store

Log maintenance: log type and remain number of days

The images directory: grasp the position of the figure to save by browsing to choose storage location

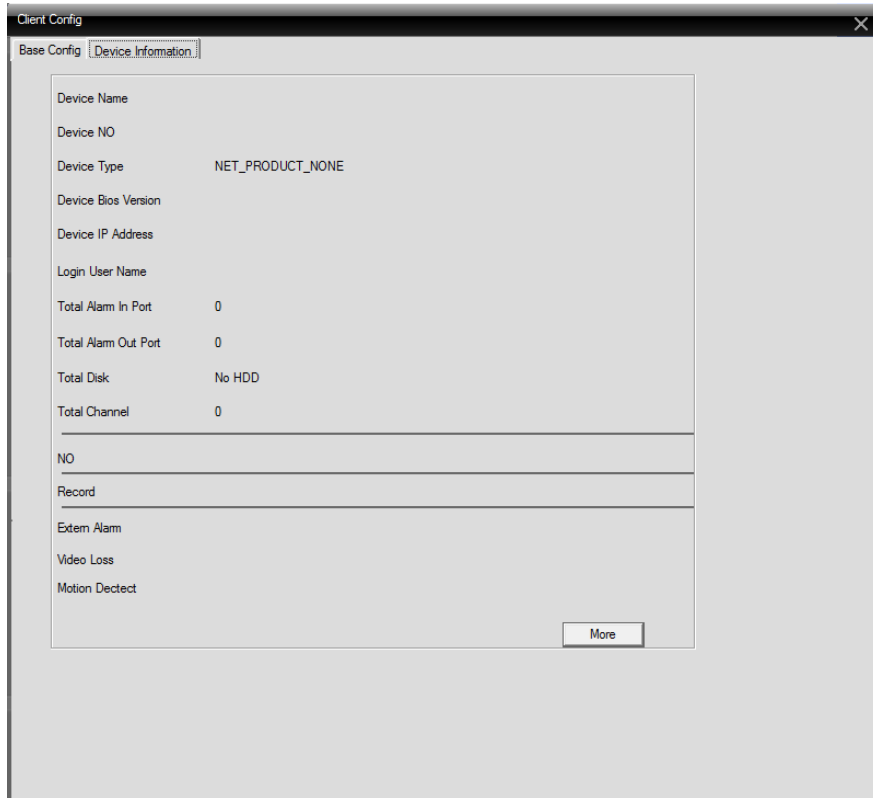
Video directory: the location of the client to save the video by browsing to select storage location

Time to sync with PC: adjusting the time of equipment to their computer synchronization

Version information: displays the version information of CMS

Language selection: choose the language of CMS

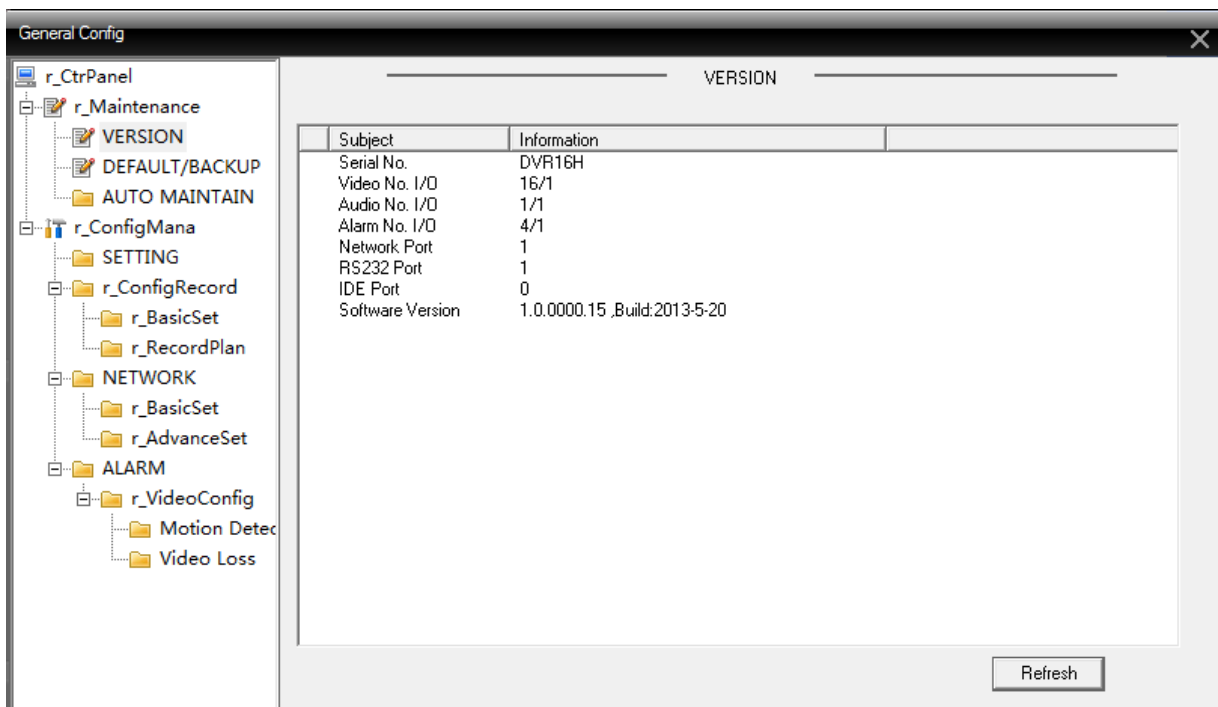
4.2.2 Equipment information



Here you can see the current connection information of the equipment. you can click **【 more 】** to get Alarm information.

4.3 Equipment information

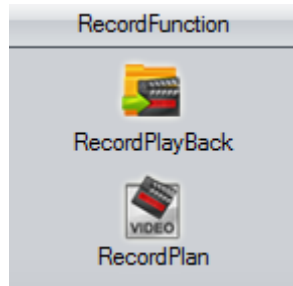
By the client for related parameter configuration and control



Select device configuration, if want to configure a device, a device in the device list selected. Device configuration of specific operations is the same with IE end.

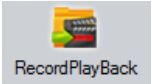
5 Video Record

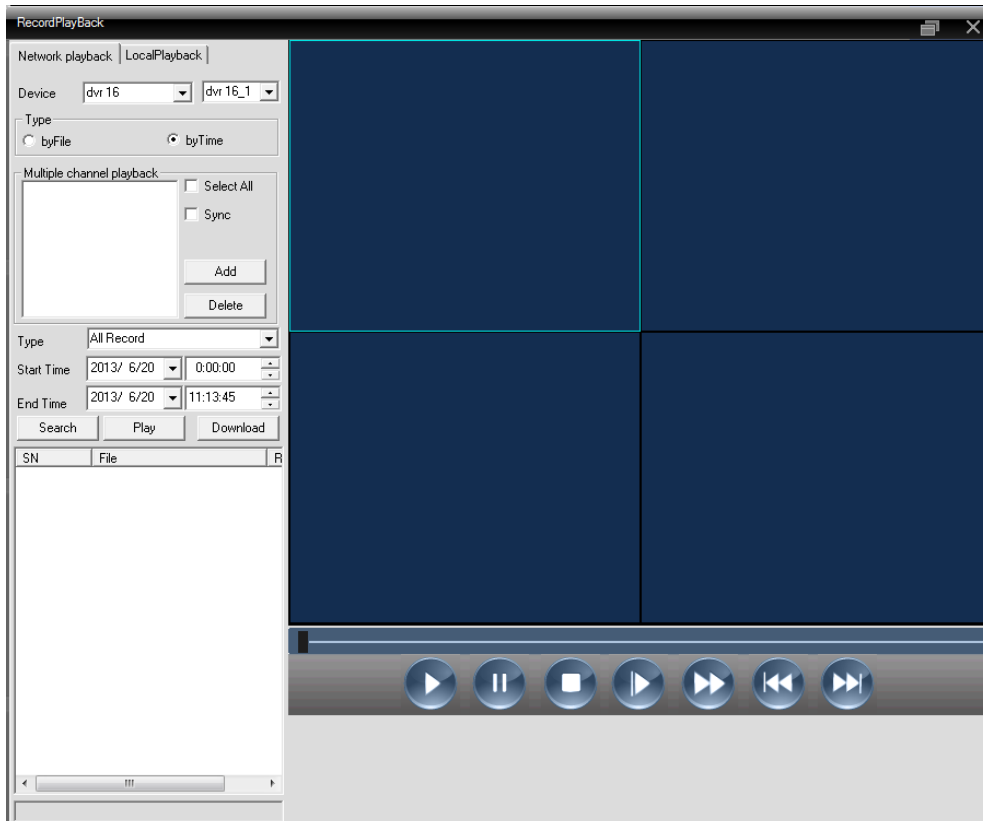
click , open video interface, the following figure:



5.1 Video Playback

5.1.1 Video Playback

click , enter the video playback interface , the following figure:



After device connected, by clicking on the select equipment you need to playback, the contents of playback interface operation is the hard disk contents.

Playback mode: ① According to the file; ② According to the time

According to the file: In turn choose playback channels, video type, time period for playback.

According to the time: Choose some playback way you want or all of the channels and played back;

To check the sync on this feature, Query each channel video playback with the same time period.

For example, by file playback:









The first step, to choose the equipment and need playback channel, and then click on add; also can select all, and then delete the playback channel you don't need.

The second step, select the playback file types, such as all videos, video alarm, etc.

The third step, select the time of the video file (start time and end time).

The fourth step, find file, and then select need playback file, ticked on, point "play" button again

As below for video playback function buttons:

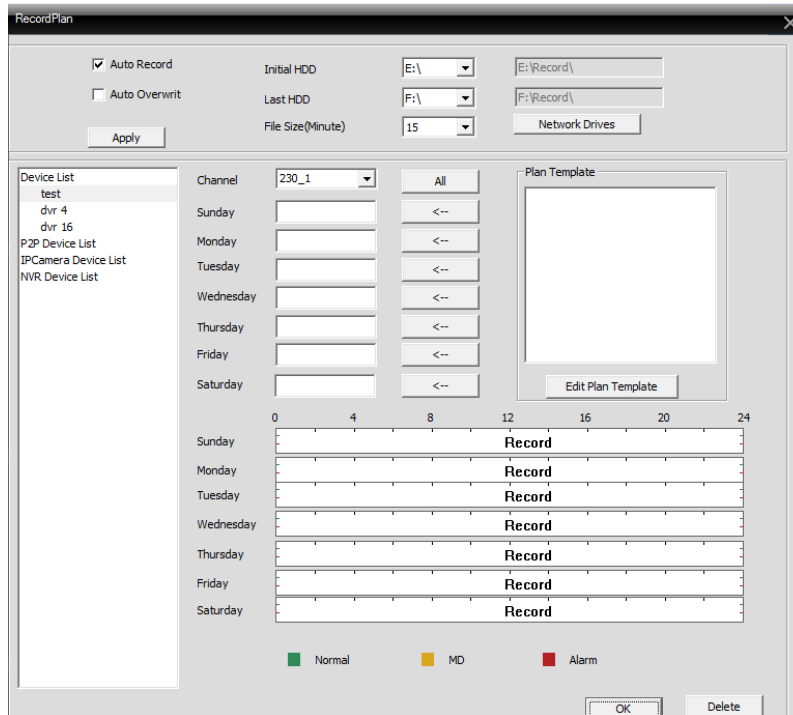
Sequence Number	icon	Introductions
1		play button
2		pause button
3		stop button
4		Slow play button
5		fast forward button
6		fast rewind button
7		previous frame
8		next frame

5.1.2 Video download/backup

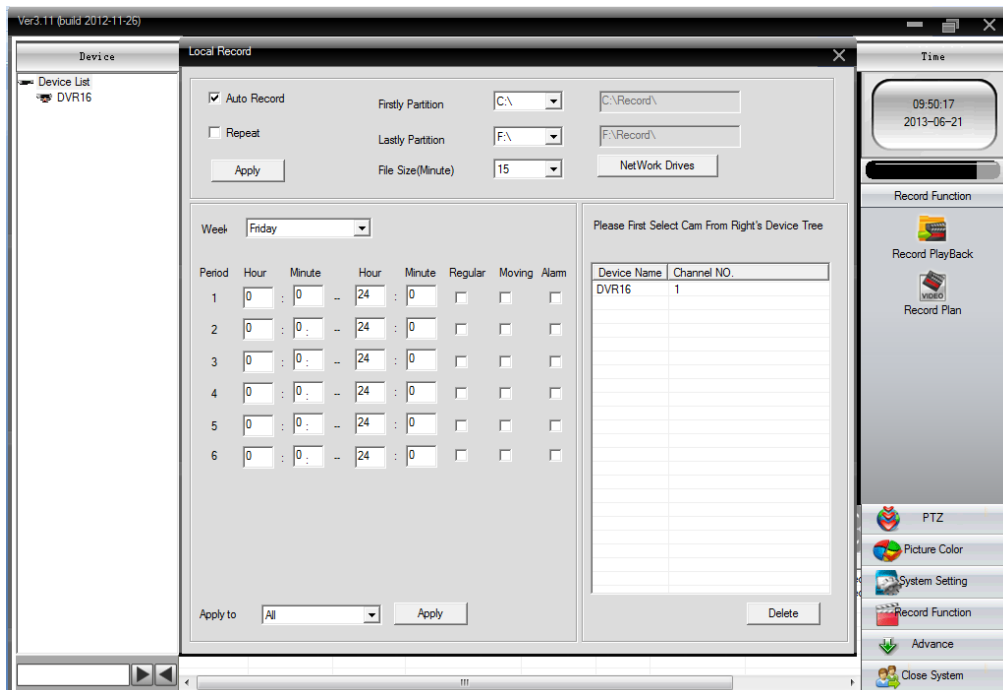
The user can set the time in the control center to find out a channel of the video file. Selected to download/backup file, click on the download/backup button, pop-up window, select save directory according to the need to select the store location to download/backup.

5.2 Video program

This feature is mainly used to implement the client video, video to the client to set time period. The following figure:

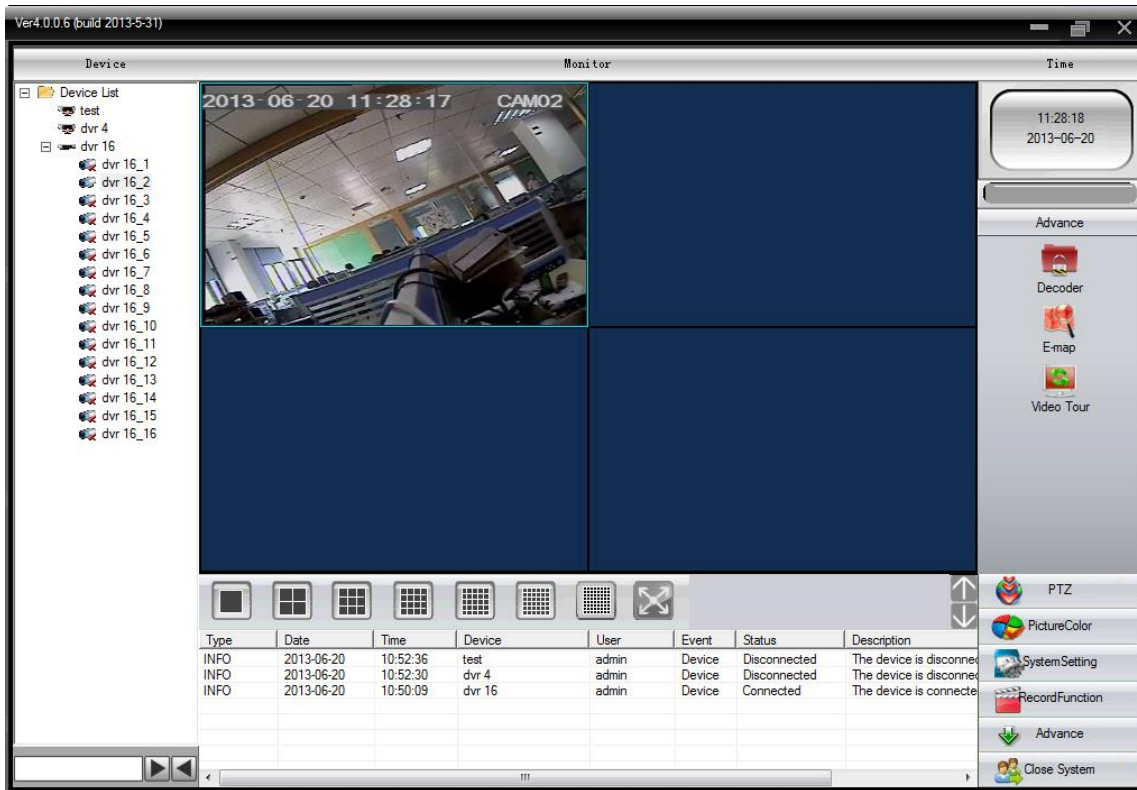


After checking the automatic video, according to user requirements you can configure the video plan. Select respectively, recorded on path, whether you need to loop video, video package length (time), the video time setting, and video channels. The following chart:



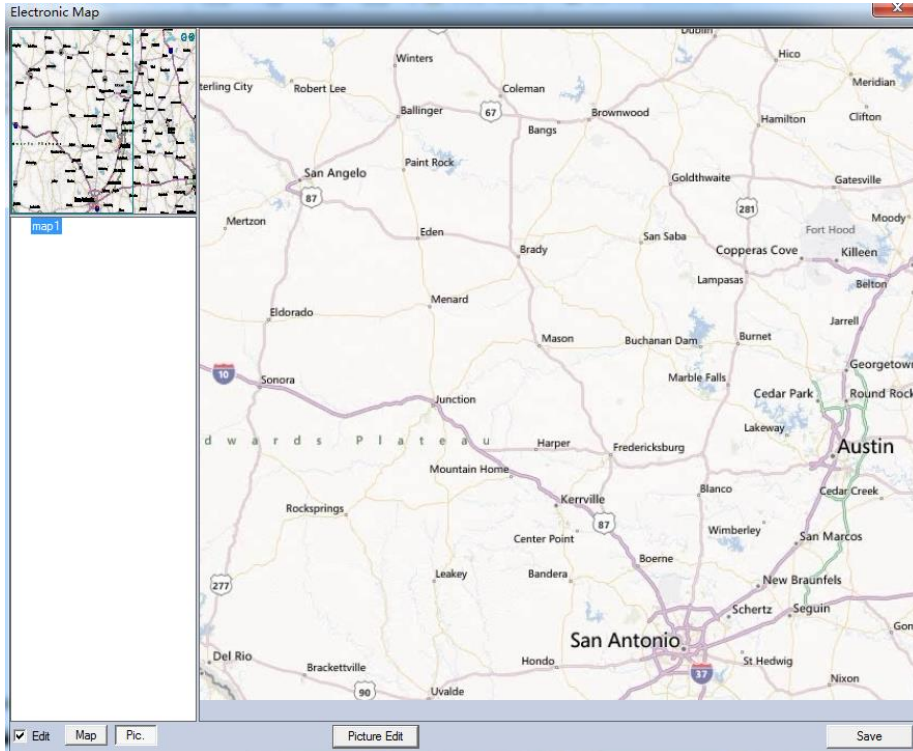
6 Advance Function

The feature includes decoder, video tour, electronic map. Interface is as follows:



6.1 The electronic map

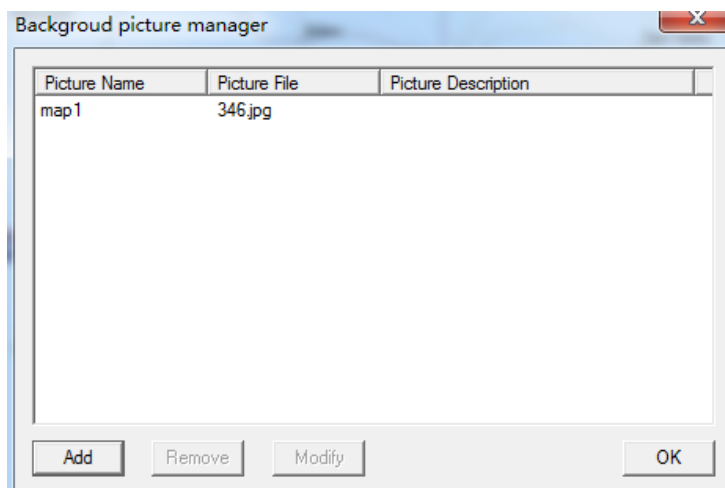
Electronic map is refers to the simulation of the scene layout. In the electronic map, the user can add or delete with field corresponding to the position of the camera and set alarm electronic map.



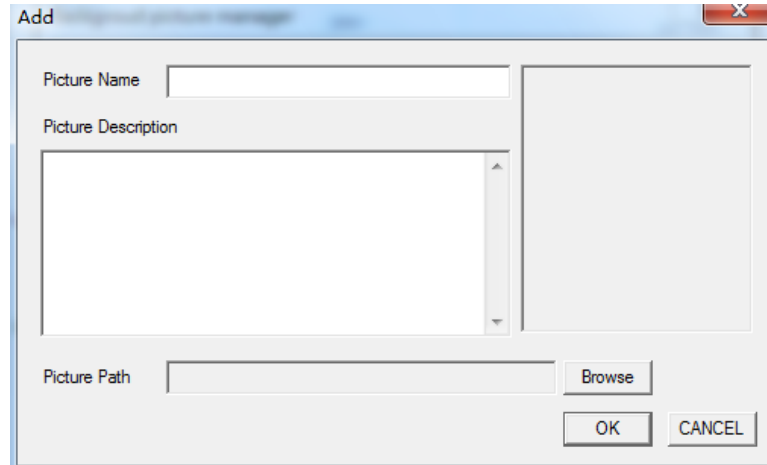
6.1.1 Image management

Check the editor, and then appear "image management" button, click on the photo management into the interface.

Add: click on "add" button, select the pictures need to add, format of JPG or BMP. Click on the "browse" to choose image file directory, add pictures, and name and add picture description, point to determine again, complete to add.

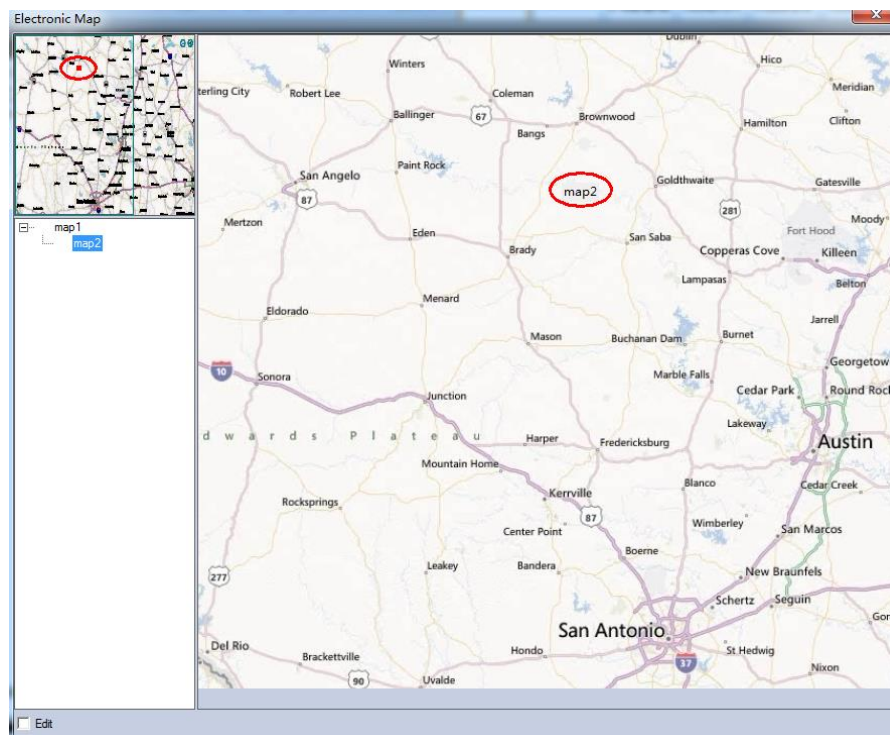


Editor: selected the picture need to edit, click "modify" button, edit images.



Delete: selected the images need to delete, then click "remove".

Group management: first of all, find a map, as the highest node map, which is a large map; Then click on the map, drag to the right of the box, and click on the "map" right now, you can see, there is a node in the white box on the left, click on the map, then would come out to map on the right, move through the box on the left to move (press and hold the left mouse button), at this point, click [images] button, drag the image that need to add to the image position, complete to add.

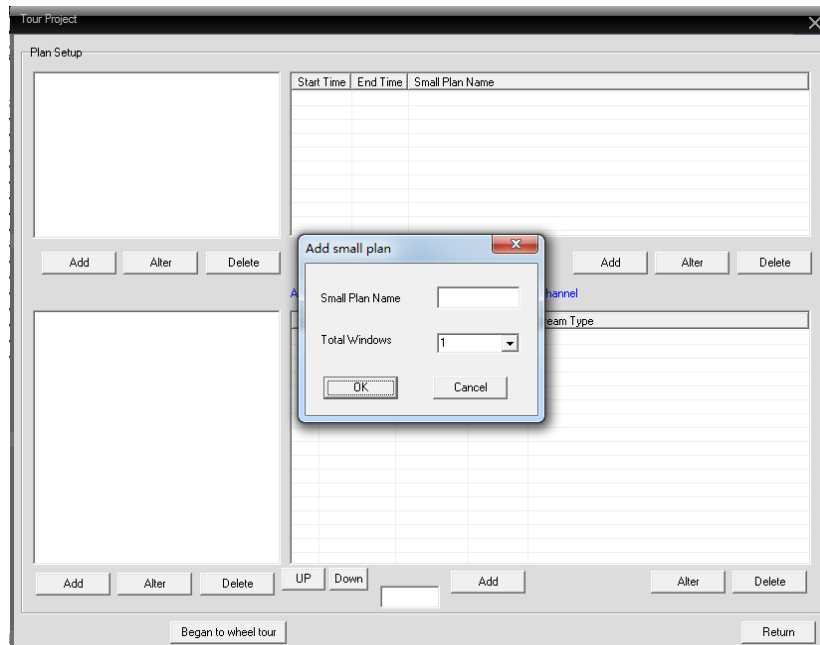


Finally click **【 save 】** button, done editing.

6.2 Video tour

Video round tour refers to different channels in a display window displayed in turn. all the channels in

Management software can display. The following chart:



Add small solution first, and then add a big plan, big plan can put the small solution included in the inside.

Add the small solution, corresponds to a channel can be as round tour route.

